

NEW

OCCLUSAL REDUCTION RING

Introducing the OCCLUSAL REDUCTION RING
from CLINICIAN'S CHOICE®
- The Easier, More Accurate Way to Ensure
Proper Occlusal Reduction



Verifying the inter-occlusal clearance created during crown and bridge preparation is often difficult. If mounted models with final dies show insufficient reduction to fabricate the requested prosthesis, it could result in a compromised restoration, which means time-wasting re-preparation, or the additional expense of a lab fabricated reduction coping. The OCCLUSAL REDUCTION RING has been developed to spare you both unnecessary inconveniences.

This simple-to-use and disposable instrument ensures the prepared tooth is reduced according to standard requirements for PFM crowns and bridges, all porcelain crowns, and veneers. It features a long handle and off-set ring in three available thicknesses (1.0, 1.5, and 2.0mm) to reflect the minimum reduction guidelines required for the most common full coverage or partial coverage restorations.

The OCCLUSAL REDUCTION RING provides greater visibility and easier access than clearance tabs and works equally well with posterior and anterior preparations (simply adjust the ring for perpendicular placement).

Order Codes

690500 - Mixed 50-Pack
• 10 yellow (1.0mm)
• 20 blue (1.5mm)
• 20 green (2.0mm)

693100 - Refill 100-Pack
• 100 yellow (1.0mm)

691100 - Refill 100-Pack
• 100 blue (1.5mm)

692100 - Refill 100-Pack
• 100 green (2.0mm)

CLINICIAN'S
CHOICE®
DENTAL PRODUCTS INC.

designed for better dentistry

BACKED BY OUR
**TRY-IT
GUARANTEE**

The Occlusal Reduction Ring from CLINICIAN'S CHOICE

General Guidelines

Specific material used and clinical application determine the amount of necessary reduction.

Porcelain posterior crowns:
• 2.0mm occlusal reduction

PFM posterior crowns:
• 1.5mm - 2.0mm occlusal reduction

Anterior crowns:
• 1.0mm - 1.5mm lingual contact clearance

Cast restorations:
• 1.0mm minimum reduction

Occlusal Reduction Ring Clinical Technique for Posterior Teeth

1. Prior to tooth reduction, select the appropriate size of Occlusal Reduction Ring to suit the case at hand.
2. Prepare the tooth using your normal technique.
3. To check the amount of reduction achieved, place the Occlusal Reduction Ring around the prepared tooth (Fig 1) (if needed, the ring can be easily reshaped after running it under warm water for several seconds).
4. Have the patient fully close into their normal bite position. Instruct the patient to hold this closed position without clenching (Fig. 2).
5. Pull the Occlusal Reduction Ring across the prepared tooth, buccally, and observe the movement of the ring (Fig 3).
 - a) If the ring pulls through cleanly, you have successfully verified the minimal desired occlusal reduction.
 - b) If the ring does not pull through cleanly, observe where it is catching and further reduce that specific area of the tooth.



Note: If desired, a marking material (such as HiSite, Ultradent) may be placed on the Occlusal Reduction Ring to mark the exact contact location on the prepared tooth. This area can then be reduced to the desired inter-occlusal clearance.

1-800-265-3444

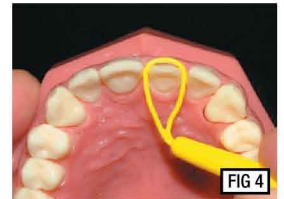
www.clinicianschoice.com



Occlusal Reduction Ring Clinical Techniques for Anterior Teeth

Anterior Labial Reduction

1. Place the appropriate Occlusal Reduction Ring around the tooth. Run the ring under warm water, if necessary, to facilitate adaptation.
2. Pull the ring toward the lingual so the ring conforms to the contour of the tooth (Fig 4).
3. The outside of the Occlusal Reduction Ring should reflect the normal anatomic tooth contour, if adequate reduction has occurred. If not, continue to reduce the labial surface of the tooth until the ideal amount of tooth structure has been removed.



Anterior Lingual Reduction

The lingual concavity portion of the anterior teeth is one of the most difficult areas to evaluate for proper reduction. Verify anterior lingual reduction simply and easily with the Occlusal Reduction Ring.



1. After straightening the proper size of Occlusal Reduction Ring, place the ring around the tooth that has been reduced (Fig 5).
2. Have your patient close into centric occlusion without clenching (Fig 6).
3. Pull the ring downward through the incisal area of the anterior teeth (Fig 7). If the rings pulls through cleanly, enough reduction has occurred. If the ring binds while being pulled, observe where it is catching and continue to remove the tooth structure at that location. Continue reduction until the ring pulls through easily without binding.

Note: If desired, a marking material (such as HiSite, Ultradent) may be placed on the Occlusal Reduction Ring to mark the exact area of lingual interference.

**CLINICIAN'S
CHOICE®**
DENTAL PRODUCTS INC.
designed for better dentistry